



SOLUZIONI ENERGETICHE FOTOVOLTAICHE PER OGNI SPAZIO ED ESIGENZA



||||| **CATALOGO AENERGYA 2025**



Lunedì - Venerdì | 9.00 - 18.30

on@aenergya.com | +39 049 2328550

AENERGYA - Projected by Atena.net - www.aenergya.com - Padova 35129 - Italy

● Pannelli

Pannelli Flessibili **03**

AE Flex 200/400/520 W

Pannelli Rigidi **06**

Traditional 455/580W, LW 225/450W, Rouge AE 400W

Pannelli Speciali (BIPV) **09**

Coppo FV, Tegola FV, Facciate FV, Semi-trasparente

● Inverter

Micro-Inverter **16**

AE 400/800, AE 400/800-S

All in One - Inverter + Batterie **18**

AE 3-6K M-Tower

Inverter Home **19**

AE 3-6K HSP, AE 6-12K HTP

Inverter Industrial **21**

AE 17-25K, AE 30-40K, AE 50-70K, AE 100-136K

● Batterie

Low Voltage Battery **26**

Batteria configurabile | Modulare, AE Low Tower 2.56

High Voltage Battery **27**

Batteria configurabile | Modulare, AE High Tower 5.12

● Configurazioni

Configurazioni All In One **29**

AE 3K M-Tower, AE 4K M-Tower, AE 6K M-Tower

Configurazioni Inverter Home + Batteria **30**

AE 3K M-Tower, AE 4K M-Tower, AE 6K M-Tower

Configurazioni Inverter Industrial + Batteria **31**

AE 3K M-Tower, AE 4K M-Tower, AE 6K M-Tower

Pannelli



● PANNELLI

| | | |
|------------|--------------------------|----|
| Flessibili | ● AE PANEL FLEX 200 W | 3 |
| | ● AE PANEL FLEX 400 W | 4 |
| | ● AE PANEL FLEX 520 W | 5 |
| Rigidi | ○ TRADITIONAL 455/580 W | 6 |
| | ○ LIGHT WEIGHT 225/450 W | 7 |
| | ○ ROUGE 400 W | 8 |
| Speciali | ● TEGOLA FV | 9 |
| | ● COPPO FV | 10 |
| | ● FACCIATE FV | 11 |
| | ● SEMI-TRASPARENTE | 14 |

AE PANEL FLEX 200

● PANNELLI
Flessibili

- Design Flessibile
- Potenza 200W
- Dimensioni 918 x 1154 x 2.5mm
- Peso 3.3 Kg
- Materiale: EVA, Full Black
- Raggio Curvatura: 0.30m
- Efficienza nominale 18.3%



| | |
|---------------------|---------------------|
| Dimensioni | 918 x 1154 x 2.5 mm |
| Peso | 3.3 Kg |
| Raggio di curvatura | 0.3 m |
| Classe Ignifuga | Classe C |
| Materiale | EVA, Full black |

| | |
|----------------------------|--------|
| Potenza Max | 200W |
| Tensione Max | 15.90V |
| Tensione a circuito aperto | 19.0V |
| Corrente di cortocircuito | 13.52A |
| Efficienza del modulo | 18.3% |

CERTIFICAZIONI



APPLICAZIONI



BALCONE

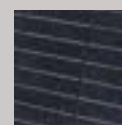


PARETE



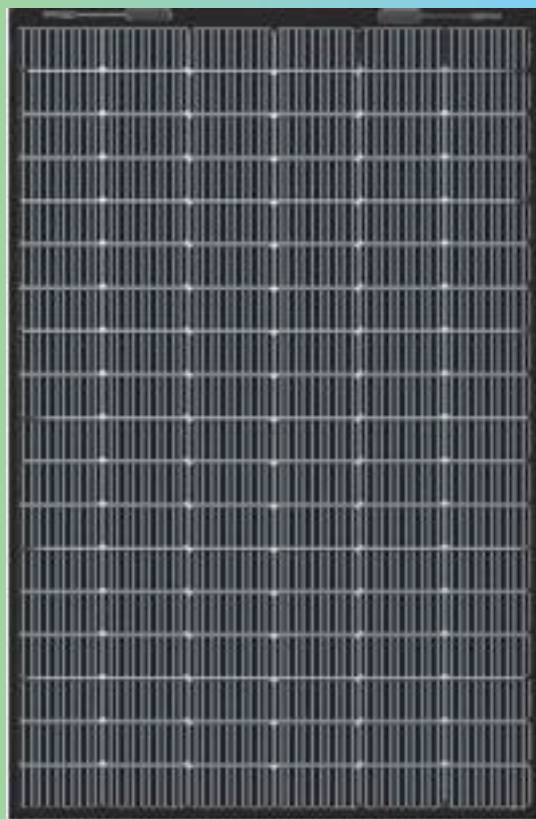
TETTO

FINITURE



FULL BLACK

- Design Flessibile
- Potenza 400W
- Dimensioni 1737 x 1142 x 2.5 mm
- Peso 7 Kg
- Materiale: EVA, Classic or Full Black
- Raggio Curvatura: 0.50m
- Efficienza nominale 20.2%



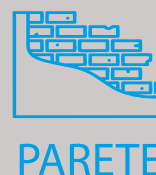
| | |
|---------------------|----------------------------|
| Dimensioni | 1737 x 1142 x 2.5 mm |
| Peso | 7 Kg |
| Raggio di curvatura | 0.5 m |
| Classe Ignifuga | Classe C |
| Materiale | EVA, Classic or Full black |

| | |
|----------------------------|--------|
| Potenza Max | 400W |
| Tensione Max | 30.85V |
| Tensione a circuito aperto | 36.80V |
| Corrente di cortocircuito | 13.70A |
| Efficienza del modulo | 20.2% |

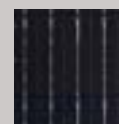
CERTIFICAZIONI



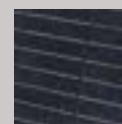
APPLICAZIONI



FINITURE

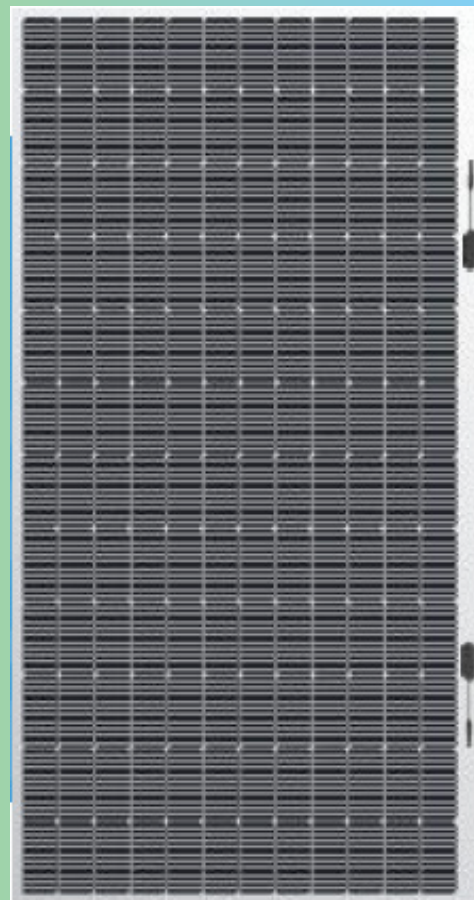


CLASSIC



FULL BLACK

- Design Flessibile
- Potenza 520W
- Dimensioni 2246 x 1185 x 2.5mm
- Peso 7.5 Kg
- Materiale: EVA, Classic
- Raggio Curvatura: 0.50m
- Efficienza nominale 19.5%



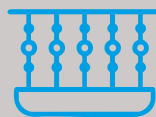
| | |
|---------------------|----------------------|
| Dimensioni | 2246 x 1185 x 2.5 mm |
| Peso | 7.5 Kg |
| Raggio di curvatura | 0.5 m |
| Classe Ignifuga | Classe C |
| Materiale | EVA, Classic |

| | |
|----------------------------|--------|
| Potenza Max | 520W |
| Tensione Max | 40.24V |
| Tensione a circuito aperto | 48.10V |
| Corrente di cortocircuito | 13.62A |
| Efficienza del modulo | 19.5% |

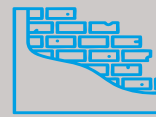
CERTIFICAZIONI



APPLICAZIONI



BALCONE

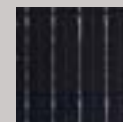


PARETE



TETTO

FINITURE



CLASSIC

TRADITIONAL 455/580

● PANNELLI
Rigidi

- Design Rigido
- Potenza 455/580W
- Dimensioni 1762 x 1134 x 30mm | 2278 x 1134x 30 mm
- Peso 21/31.7 Kg
- Materiale: Vetro, Nero
- Telaio: Lega di Alluminio
- Efficienza nominale 22.77%



455 W

| | |
|-----------------|---------------------|
| Dimensioni | 1762 x 1134 x 30 mm |
| Peso | 21 kg |
| Telaio | Lega di alluminio |
| Classe Ignifuga | Classe C |
| Materiale | Vetro, Nero |

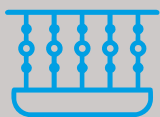
| | |
|----------------------------|--------|
| Potenza Max | 455W |
| Tensione Max | 33V |
| Tensione a circuito aperto | 39.48V |
| Corrente di cortocircuito | 14.57A |
| Efficienza del modulo | 22.77% |

580 W

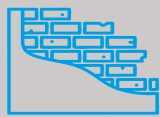
| | |
|-----------------|---------------------|
| Dimensioni | 2278 x 1134 x 30 mm |
| Peso | 31.7 kg |
| Telaio | Lega di alluminio |
| Classe Ignifuga | Classe C |
| Materiale | Vetro, Nero |

| | |
|----------------------------|--------|
| Potenza Max | 580W |
| Tensione Max | 42.71V |
| Tensione a circuito aperto | 51.42V |
| Corrente di cortocircuito | 14.37A |
| Efficienza del modulo | 22.45% |

APPLICAZIONI



BALCONE



PARETE



TETTO

FINITURE



CLASSIC



FULL BLACK

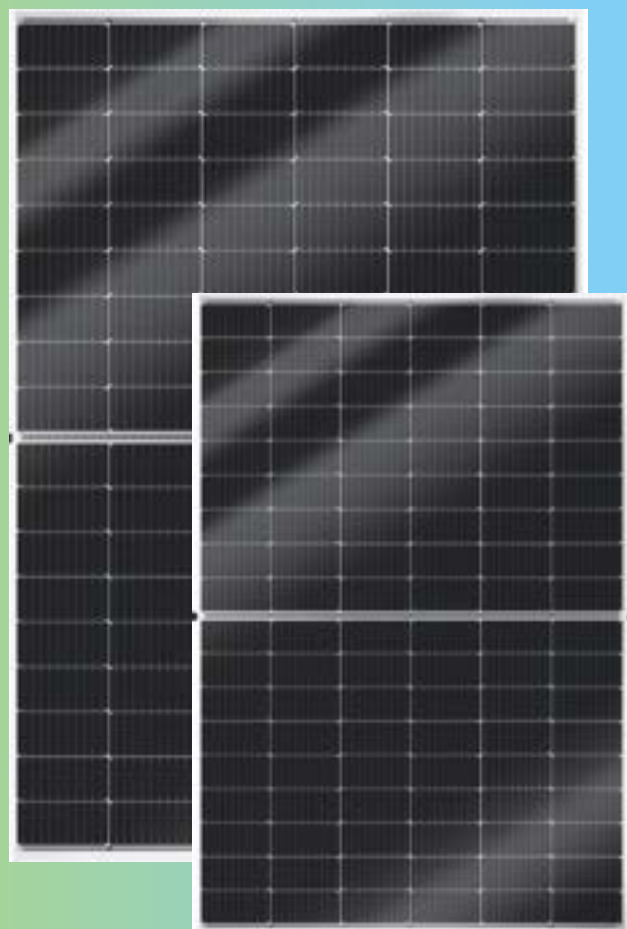
CERTIFICAZIONI



LIGHT WEIGHT 220/450

● PANNELLI
Rigidi

- Design Light Weight Rigido
- Potenza 220/450W
- Dimensioni 1088 x 900 x 2.5 mm | 1716 x 1128 x 2.5 mm
- Peso 4/9.5 Kg
- Materiale: Vetro, Nero
- Telaio:
- Efficienza nominale 18.09%



220 W

| | |
|---------------------|---------------------|
| Dimensioni | 1088 x 900 x 2.5 mm |
| Peso | 4 Kg |
| Raggio di curvatura | // |
| Classe Ignifuga | Classe A |
| Materiale | Vetro, Nero |

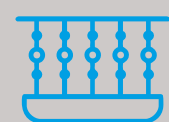
| | |
|----------------------------|--------|
| Potenza Max | 220W |
| Tensione Max | 26.08V |
| Tensione a circuito aperto | 29.1V |
| Corrente di cortocircuito | 9.23A |
| Efficienza del modulo | 18.09% |

450 W

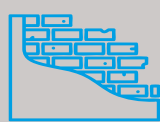
| | |
|---------------------|----------------------|
| Dimensioni | 1716 x 1128 x 2.5 mm |
| Peso | 9.5 Kg |
| Raggio di curvatura | // |
| Classe Ignifuga | Classe A |
| Materiale | Vetro, Nero |

| | |
|----------------------------|--------|
| Potenza Max | 450W |
| Tensione Max | 34.05V |
| Tensione a circuito aperto | 40.90V |
| Corrente di cortocircuito | 13.76A |
| Efficienza del modulo | 22.55% |

APPLICAZIONI



BALCONE

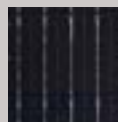


PARETE



TETTO

FINITURE



CLASSIC

CERTIFICAZIONI



ROUGE 400

● PANNELLI
Rigidi

- Design Rigido
- Potenza 400W
- Dimensioni 1755x1038x35mm
- Peso 20 Kg
- Materiale: Vetro, Rosso
- Telaio: Lega di Alluminio
- Efficienza nominale 21.62%



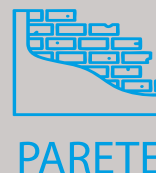
| | |
|---------------------|-------------------|
| Dimensioni | 1755x1038x35mm |
| Peso | 20 kg |
| Raggio di curvatura | Lega di alluminio |
| Classe Ignifuga | Classe C |
| Materiale | Vetro, Nero |

| | |
|----------------------------|--------|
| Potenza Max | 400W |
| Tensione Max | 34.7V |
| Tensione a circuito aperto | 42.20V |
| Corrente di cortocircuito | 12.13A |
| Efficienza del modulo | 21.62% |

CERTIFICAZIONI



APPLICAZIONI



FINITURE



RED ROOF

TEGOLA FV - 30 W

● PANNELLI
Speciali

- Design BIPV
- Potenza 30W
- Dimensioni 427x417x20 mm
- Peso 2.07kg
- Materiale: Vetro temperato



| | |
|-----------------|-----------------|
| Dimensioni | 427x417x20mm |
| Peso | 2.07kg |
| Junction Box | IP67 |
| Classe Ignifuga | Classe C |
| Materiale | Vetro temperato |

| | |
|-------------------------------|-------|
| Potenza Max | 30W |
| Tensione Max | 4.74V |
| Tensione a circuito aperto | 5.51V |
| Corrente di cortocircuito | 6.75A |
| Corrente max di funzionamento | 6.45A |

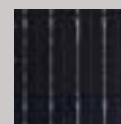
CERTIFICAZIONI



APPLICAZIONI



FINITURE



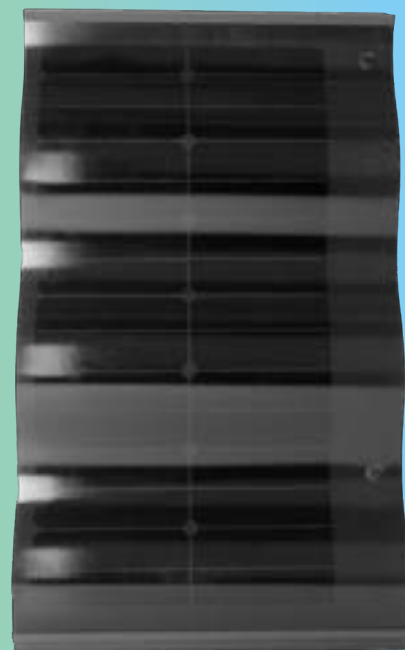
CLASSIC

RED ROOF

COPPO FV - 50W

PANNELLI
Speciali

- Design BIPV
- Potenza 50 W
- Dimensioni 706 x 480 x 7 mm
- Peso 6.0 Kg
- Materiale: Vetro temperato 3.2mm
- Tipo Cella: HPBC-182
- Cella: 182 x 36 mm



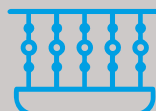
| | |
|------------------|-----------------------|
| Dimensioni | 706 x 480 x 7 mm |
| Peso | 6.0 Kg |
| Tipo cella | HPBC-182 |
| Dimensioni cella | 182 x 36 mm |
| Materiale | Vetro temperato 3.2mm |

| | |
|----------------------------|--------|
| Potenza Max | 50W |
| Tensione Operativa | 21.76V |
| Tensione a circuito aperto | 25.6V |
| Corrente di cortocircuito | 2.42A |
| Efficienza del modulo | 14.8% |

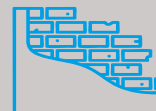
CERTIFICAZIONI



APPLICAZIONI



BALCONE

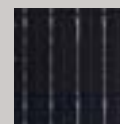


PARETE



TETTO

FINITURE



CLASSIC



RED ROOF

FACCIATA FV - 40W

● PANNELLI
Speciali

- Design BIPV
- Potenza 40W
- Dimensioni 1160 x 400 x 7.5 mm
- Peso 8.5 Kg
- Materiale: Vetro temperato



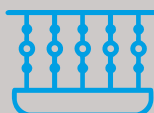
| | |
|-----------------|---------------------|
| Dimensioni | 1160 x 400 x 7.5 mm |
| Peso | 8.5 kg |
| Classe Ignifuga | Classe A |
| Materiale | Vetro temperato |

| | |
|----------------------------|--------|
| Potenza Max | 40W |
| Tensione Operativa | 10.68V |
| Tensione a circuito aperto | 15.12V |
| Corrente di cortocircuito | 5.23A |
| Corrente operativa max | 3.74A |

CERTIFICAZIONI



APPLICAZIONI



BALCONE

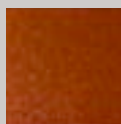


PARETE



TETTO

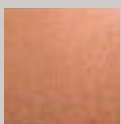
FINITURE



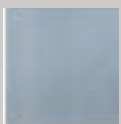
METAL
BROWN



BLACK



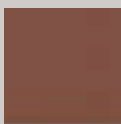
BRILLIANT
ORANGE



ICE
WHITE



ELECTRIC
BLUE



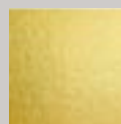
TERRA
COTTA



PINE
GREEN



AGATE
GREY



METAL
GOLD

FACCIATA FV - 210W

● PANNELLI
Speciali

- Design BIPV
- Potenza 215W
- Dimensioni 1530 x 1000 x 7.5 mm
- Peso 26.5 Kg
- Materiale: Vetro temperato



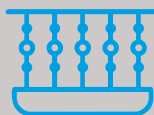
| | |
|------------------|----------------------|
| Dimensioni | 1530 x 1000 x 7.5 mm |
| Peso | 26.5 kg |
| Classe Ignifuga | Classe A |
| Materiale | Vetro temperato |
| Personalizzabile | Si |

| | |
|----------------------------|--------|
| Potenza Max | 215W |
| Tensione Operativa | 20.08V |
| Tensione a circuito aperto | 24.2V |
| Corrente di cortocircuito | 12.3A |
| Corrente operativa max | 10.33A |

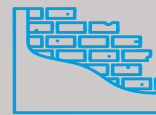
CERTIFICAZIONI



APPLICAZIONI



BALCONE

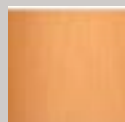


PARETE

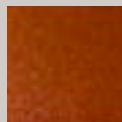


TETTO

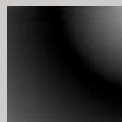
FINITURE



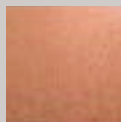
BRICK
RED



METAL
BROWN



BLACK



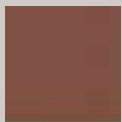
BRILLIANT
ORANGE



ICE
WHITE



ELECTRIC
BLUE



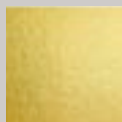
TERRA
COTTA



PINE
GREEN



AGATE
GREY



METAL
GOLD

FACCIATA FV - 360W

● PANNELLI
Speciali

- Design BIPV
- Potenza 310W
- Dimensioni 1716 x 1128 x 7.5 mm
- Peso 34 Kg
- Materiale: Vetro temperato



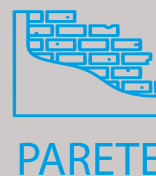
| | |
|------------------|---------------------|
| Dimensioni | 1716x 1128 x 7.5 mm |
| Peso | 34 kg |
| Classe Ignifuga | Classe A |
| Materiale | Vetro temperato |
| Personalizzabile | Si |

| | |
|----------------------------|--------|
| Potenza Max | 310W |
| Tensione Operativa | 26.23V |
| Tensione a circuito aperto | 34.84V |
| Corrente di cortocircuito | 12.35A |
| Corrente operativa max | 11.82A |

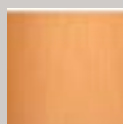
CERTIFICAZIONI



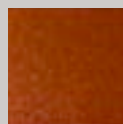
APPLICAZIONI



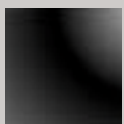
FINITURE



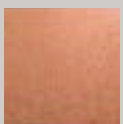
BRICK
RED



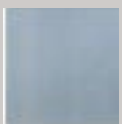
METAL
BROWN



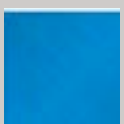
BLACK



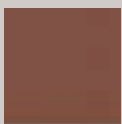
BRILLIANT
ORANGE



ICE
WHITE



ELECTRIC
BLUE



TERRA
COTTA



PINE
GREEN



AGATE
GREY

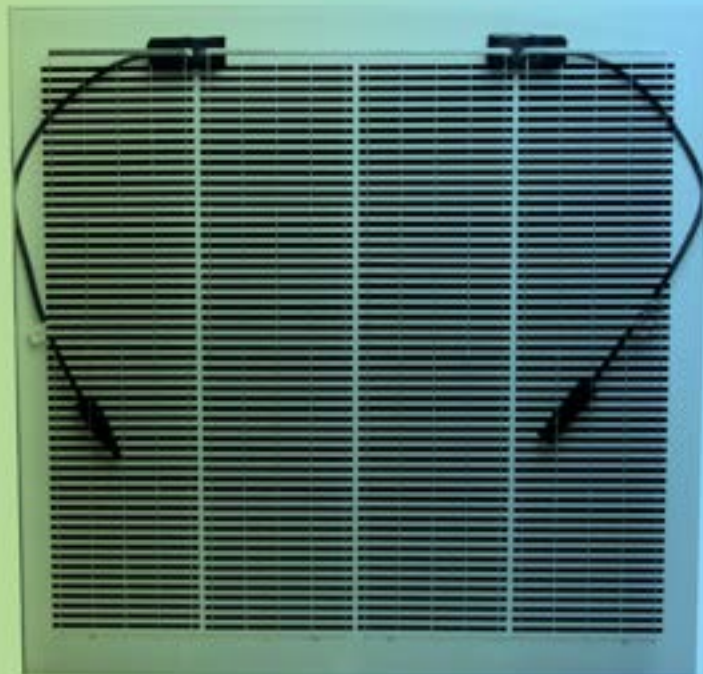


METAL
GOLD

SEMI-TRASPARENTE 123W

● PANNELLI
Speciali

- Design BIPV
- Potenza 123 W
- Dimensioni 1760x945x13mm
- Peso 55 kg
- Materiale: Vetro temperato 6mm



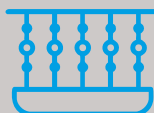
| | |
|-----------------|---------------------|
| Dimensioni | 1760x945x13 mm |
| Peso | 55 kg |
| Classe Ignifuga | Classe A |
| Materiale | Vetro temperato 6mm |
| Trasparenza | 58% |

| | |
|---------------------------|--------|
| Potenza | 123W |
| Tensione operativa | 20.74V |
| Corrente operativa | 5.93A |
| Corrente di cortocircuito | 6.24A |
| Efficienza modulo | 17.6% |

CERTIFICAZIONI



APPLICAZIONI



BALCONE



PARETE



TETTO

FINITURE



TRASPARENT
GLASS

Inverter



● INVERTER

| | | |
|------------|-------------------|----|
| Micro | ● AE 400/800 | 16 |
| | ● AE 400/800-S | 17 |
| All in One | ● AE 3-6K M-Tower | 18 |
| Home | ○ AE 3-6K HSP | 19 |
| | ○ AE 6-12K HTP | 20 |
| Industrial | ● AE 17-25K | 21 |
| | ● AE 30-40K | 22 |
| | ● AE 50-70K | 23 |
| | ● AE 100-136K | 24 |

- MICROINVERTER
- MONOFASE
- POTENZA 400/800 W
- DIMENSIONI 168x182x51mm / 290x205x48mm
- PESO 1,3kg / 1,7 kg



CERTIFICATIONS CE / TUV / VDE4105 / ETV / INMETRO

AE400

| | |
|---------------------------------|----------|
| Potenza raccomandata (INPUT DC) | 300-550W |
| Tensione di avviamento | 22V |
| Range Voltaggio MPPT | 16-60V |
| Input Max Voltaggio | 60V |
| Input Max corrente | 14A |
| Corrente di cortocircuito | 20A |

| | |
|-----------------------------|--------------|
| Potenza Max (OUTPUT AC) | 350VA |
| Potenza nominale Max | 350W |
| Corrente di uscita nominale | 1.52A |
| Corrente max in uscita | 1.59A |
| Tensioni di uscita nominale | 220-230-240V |
| Unità max montate in serie | 11 |

AE800

| | |
|---------------------------------|----------|
| Potenza raccomandata (INPUT DC) | 300-550W |
| Tensione di avviamento | 22V |
| Range Voltaggio MPPT | 16-60V |
| Input Max Voltaggio | 60V |
| Input Max corrente | 14A |
| Corrente di cortocircuito | 20A |

| | |
|-----------------------------|--------------|
| Potenza Max (OUTPUT AC) | 800VA |
| Potenza nominale Max | 800W |
| Corrente di uscita nominale | 3.48A |
| Corrente max in uscita | 4.0A |
| Tensioni di uscita nominale | 220-230-240V |
| Unità max montate in serie | 5 |

CARATTERISTICHE



PLUG & PLAY

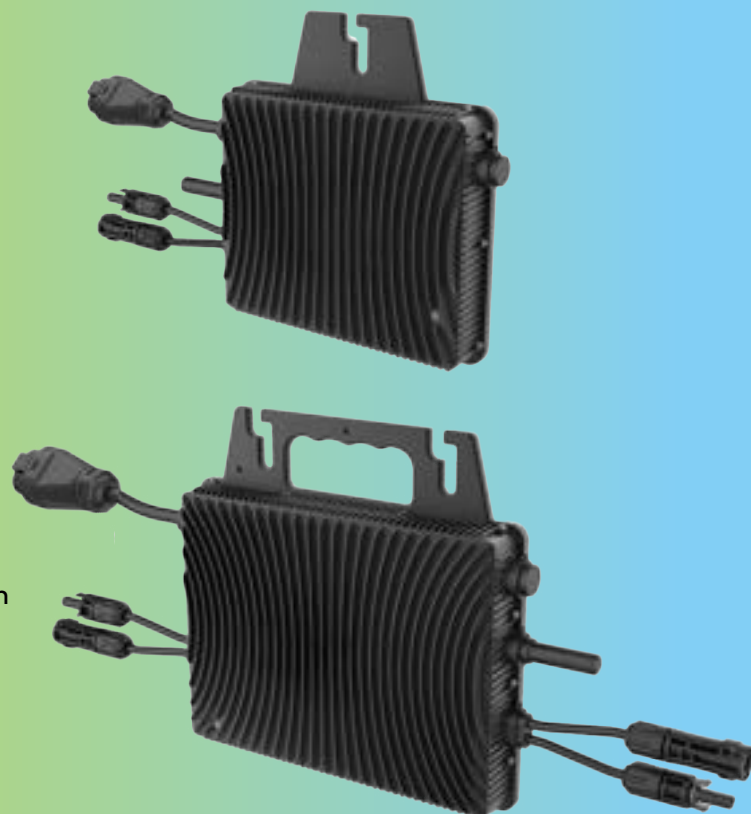


WI-FI CONNECT

APP

APP DEDICATA

- MICROINVERTER
- MONOFASE
- POTENZA 400/800 W
- DIMENSIONI 192x208x35mm / 235x223x35mm
- PESO 1.80kg / 3.3 kg



CERTIFICATIONS CE / CEI 0-21 / TUV / VDE4105 / EN50549-1

AE400-S

| | |
|---------------------------------|----------|
| Potenza raccomandata (INPUT DC) | 320-540W |
| Tensione di avviamento | 22V |
| Range Voltaggio MPPT | 25-48V |
| Input Max Voltaggio | 60V |
| Input Max corrente | 16A |
| Corrente di cortocircuito | 20A |

| | |
|-----------------------------|-----------|
| Potenza Max (OUTPUT AC) | 400VA |
| Potenza nominale Max | 400(350W) |
| Corrente di uscita nominale | 2.29A |
| Corrente max in uscita | 1.7A |
| Tensioni di uscita nominale | 180-270V |
| Unità max montate in serie | 10 |

AE800-S

| | |
|--|--------|
| Potenza raccomandata (INPUT DC) (320-540W)*2 | |
| Tensione di avviamento | 22V |
| Range Voltaggio MPPT | 25-48V |
| Input Max Voltaggio | 60V |
| Input Max corrente | 16*2A |
| Corrente di cortocircuito | 20A |

| | |
|-----------------------------|--------------|
| Potenza Max (OUTPUT AC) | 800VA |
| Potenza nominale Max | 800W |
| Corrente di uscita nominale | 3.48A |
| Corrente max in uscita | 4.0A |
| Tensioni di uscita nominale | 220-230-240V |
| Unità max montate in serie | 7 |

CARATTERISTICHE



PLUG & PLAY



WI-FI CONNECT

APP

APP DEDICATA

AE 3-6K Mono Tower

**INVERTER+
BATTERIA**
All In One

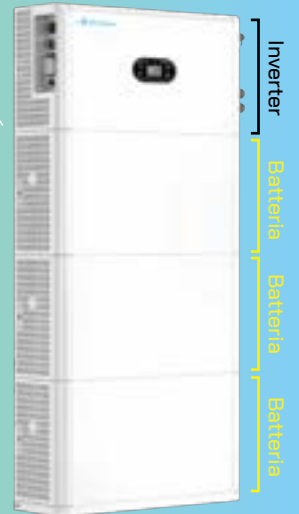
INVERTER 3.68kWh + 1 Batteria



INVERTER 4.60kWh + 2 Batterie



INVERTER 6.0kWh + 3 Batterie



TECHNICAL DATA - AE 3-6K M-Tower (Inverter+Batteria modulare)

| | | | |
|----------------------------------|---------------|----------------|----------------|
| Battery energy | 5.12 kWh | 10.24kWh | 15.36kWh |
| Number of Batteries | 1 | 2 | 3 |
| Dimensions | 640x875x210mm | 640x1250x210mm | 640x1625x210mm |
| Battery Voltage | 51.2V | 51.2V | 51.2V |
| Voltage range | 43.2/56.16V | 43.2/56.16V | 43.2/56.16V |
| Max Charging/discharging current | 100A | 100A | 100A |

| INVERTER MODULE | AE-3K M-Tower | AE-4K M-Tower | AE-6K M-Tower |
|---|---------------------------|---------------------------|---------------------------|
| DC INPUT | | | |
| Max PV Input Power | 5.4kW | 6.9kW | 9kW |
| Max PV Input Voltage | 600V | 600V | 600V |
| Start-up Voltage | 100V | 100V | 100V |
| MPPT Voltage range | 100-550V | 100-550V | 100-550V |
| Numbers of MPP Trackers/String per MPPT | 2/1 | 2/1 | 2/1 |
| Max PV Input Current | 16A | 16A | 16A |
| Max Short circuit Current per MPPT | 24A | 24A | 24A |
| AC OUTPUT | | | |
| Rated output power | 3.68kWh | 4.6kWh | 6kWh |
| Max output power | 3.68kWh | 4.6kWh | 6kWh |
| Max output current | 16A | 20.9A | 26.1A |
| Rated voltage | 230V | 230V | 230V |
| Rated frequency | 50/60Hz | 50/60Hz | 50/60Hz |
| THDI(Rated power) | <3% | <3% | <3% |
| Power factor | 0.8 leading...0.8 lagging | 0.8 leading...0.8 lagging | 0.8 leading...0.8 lagging |

CERTIFICATIONS

IEC/EN 62109-1/2, IEC/EN 61000-1/3, EN50549, IEC 61727/62116, VDE 4105, CEI 0-21, UNE217001, UNE217002, RD647, NTS

- INVERTER HOME
- HYBRID MONOFASE
- POTENZA DA 3 A 6 KW
- DIMENSIONI 490x395x200mm
- PESO 20kg



CERTIFICATIONS

IEC/EN 62109-1/2, IEC/EN 61000-6-1/3, IEC61727/IEC62116, EN50549, CE10-21, C10/C11, VDE4105, VDE0126, G98/99, RD244, UNE217001, UNE217002, AS4777, NRS097-2-1



EASY INSTALL



AFFIDABILE



PLUG & PLAY



WI-FI CONNECT

| INVERTER MODULE | AE-3K HSP | AE-4K HSP | AE-6K HSP |
|---|---------------------------|---------------------------|---------------------------|
| DC INPUT | | | |
| Max PV Input Power | 4.5kW | 6kW | 9kW |
| Max PV Input Voltage | 600V | 600V | 600V |
| Start-up Voltage | 100V | 100V | 100V |
| MPPT Voltage range | 100-550V | 100-550V | 100-550V |
| Numbers of MPP Trackers/String per MPPT | 2/1 | 2/1 | 2/1 |
| Max Current per MPPT | 16A | 16A | 16A |
| Max Short circuit Current per MPPT | 24A | 24A | 24A |
| AC OUTPUT | | | |
| Rated output power | 3kVA | 4kVA | 6kVA |
| Max output power | 3.3kVA | 4.4kVA | 6kVA |
| Max output current | 15A | 20A | 27.3A |
| Rated voltage | 230V | 230V | 230V |
| Rated frequency | 50/60Hz | 50/60Hz | 50/60Hz |
| THDI(Rated power) | <3% | <3% | <3% |
| Power factor | 0.8 leading...0.8 lagging | 0.8 leading...0.8 lagging | 0.8 leading...0.8 lagging |
| OUTPUT EPS | | | |
| Max output power | 3kVA | 4kVA | 6kVA |
| Max output current | 15A | 20A | 27.3A |
| Peak output power, time | 4.5kW, 10s | 6kW, 10s | 7.5kW, 10s |
| Rated voltage, frequency | 230V, 50Hz | 230V, 50Hz | 230V, 50Hz |
| THDv(Rated power) | <3% | <3% | <3% |

- INVERTER HOME
- HYBRID TRIFASE
- POTENZA DA 5 A 12 KW
- DIMENSIONI 534 x 440 x 220mm
- PESO <30kg



CERTIFICATIONS

IEC/EN 62109-1/2, IEC/EN 61000-1/3, EN50549, IEC 61727/62116, VDE 4105, CEI 0-21, UNE217001, UNE217002, RD647, NTS



EASY INSTALL



AFFIDABILE



PLUG & PLAY



WI-FI CONNECT

| INVERTER MODULE | AE-6K HTP | AE-10K HTP | AE-12K HTP |
|---|---------------------------|---------------------------|---------------------------|
| DC INPUT | | | |
| Max PV Input Power | 9.6kW | 16kW | 19.2kW |
| Max PV Input Voltage | 1100V | 1100V | 1100V |
| Start-up Voltage | 160V | 160V | 160V |
| MPPT Voltage range | 150-1000V | 150-1000V | 150-1000V |
| Numbers of MPP Trackers/String per MPPT | 2/1 | 2/1 | 2/1 |
| Max Current per MPPT | 20A | 20A | 20A |
| Max Short circuit Current per MPPT | 40A | 40A | 40A |
| AC OUTPUT | | | |
| Rated output power | 6kVA | 10kVA | 12kVA |
| Max output power | 6.6kVA | 11kVA | 13.2kVA |
| Max output current | 8.7A | 14.5A | 17.4A |
| Rated grid voltage | 230/400Vac | 230V | 230V |
| Rated grid frequency | 50/60Hz | 50/60Hz | 50/60Hz |
| THDI(Rated power) | <3% | <3% | <3% |
| Power factor | 0.8 leading...0.8 lagging | 0.8 leading...0.8 lagging | 0.8 leading...0.8 lagging |
| OUTPUT EPS | | | |
| Max output power | 6.6kVA | 11kVA | 13.2kVA |
| // | // | // | // |
| Peak output power, time | 12kW,60s | 20kW,60s | 20kW, 60s |
| Rated voltage, frequency | 230/400V, 50Hz | 230/400V, 50Hz | 230/400V, 50Hz |
| THDv(Rated power) | <3% | <3% | <3% |

- INVERTER INDUSTRIALE
- TRIFASE
- POTENZA DA 17 A 25 KW
- DIMENSIONI 534 x 440 x 220mm
- PESO 24kg



CERTIFICATIONS

IEC/EN 62109-1/2, IEC/EN 61000-6-1/3, IEC60068, IEC61683, EN 50549, IEC61727/IEC62116, CEI 0-21, C10/C11, VDE 4105, VDE 0124, RD244, UNE217001, UNE217002, NC RfG, AS4777, NB/T 32004, BIS



FAULT DETECTOR



AFFIDABILE



I-V DIAGNOSIS



WI-FI CONNECT

| INVERTER MODULE | AE 17K TGSi | AE 20K TGSi | AE 25K TGSi |
|---|--------------------------------|--------------------------------|--------------------------------|
| DC INPUT | | | |
| Max PV Input Power | 27.2kW | 32kW | 40kW |
| Max PV Input Voltage | 1100V | 1100V | 1100V |
| Start-up Voltage | 250V | 250V | 250V |
| MPPT Voltage range/Full load voltage MPPT range | 200/1000V, 480/800V | 200/1000V, 480/800V | 200/1000V, 560/800V |
| Numbers of MPP Trackers/String per MPPT | 2, 2/2 | 2, 2/2 | 2, 2/3 |
| Max Current per MPPT | 32A | 32A | 32/48A |
| Max Short circuit Current per MPPT | 48A | 48A | 40/60A |
| AC OUTPUT | | | |
| Rated output power | 17kW | 20kW | 25kW |
| Max output power | 18.8kVA | 22.2kVA | 27.5kVA |
| Max output current | 27.2A | 32.1A | 39.8A |
| Rated grid voltage | 230/400Vac, 3L/N/PE | 230/400Vac, 3L/N/PE | 230/400Vac, 3L/N/PE |
| Rated grid frequency | 50/60Hz | 50/60Hz | 50/60Hz |
| THDI(Rated power) | <3% | <3% | <3% |
| Power factor | >0.99(0.8leading...0.8lagging) | >0.99(0.8leading...0.8lagging) | >0.99(0.8leading...0.8lagging) |
| EFFICIENCY | | | |
| Max efficiency | 98.40% | 98.40% | 98.40% |
| EU Efficiency | 98.00% | 98.00% | 98.00% |
| Battery Charge/Discharge efficiency | 99.90% | 99.90% | 99.90% |

AE 30-40K TGSi

● **INVERTER**
Industrial

- INVERTER INDUSTRIALE
- TRIFASE
- POTENZA DA 30 A 40 KW
- DIMENSIONI 600 x 430 x 230mm
- PESO 30kg / 32kg



CERTIFICATIONS

IEC/EN 62109-1/2, IEC/EN 61000-6-1/3, EN50549, IEC61727/IEC62116, CEI 0-21, CEI 0-16, C10/C11, VDE 4105, VDE 0124, G99, RD244, UNE217001, UNE217002, NC RfG, NRS097-2-1, NB/T 32004, BIS



FAULT DETECTOR



AFFIDABILE



I-V DIAGNOSIS



WI-FI CONNECT

| INVERTER MODULE | AE 30K TGSi | AE 40K TGSi |
|---|--------------------------------|--------------------------------|
| DC INPUT | | |
| Max PV Input Power | 48kW | 64kW |
| Max PV Input Voltage | 1100V | 1100V |
| Start-up Voltage | 250V | 250V |
| MPPT Voltage range/Full load voltage MPPT range | 200/1000V, 500/800V | 200/1000V, 500/800V |
| Numbers of MPP Trackers/String per MPPT | 3, 2 | 4, 2 |
| Max Current per MPPT | 26A | 26A |
| Max Short circuit Current per MPPT | 32A | 32A |
| AC OUTPUT | | |
| Rated output power | 30kW | 40kW |
| Max output power | 33.3kVA | 44kVA |
| Max output current | 48.3A | 64.3A |
| Rated grid voltage | 230/400Vac, 3L/N/PE | 230/400Vac, 3L/N/PE |
| Rated grid frequency | 50/60Hz | 50/60Hz |
| THDI(Rated power) | <3% | <3% |
| Power factor | >0.99(0.8leading...0.8lagging) | >0.99(0.8leading...0.8lagging) |
| EFFICIENCY | | |
| Max efficiency | 98.60% | 98.60% |
| EU Efficiency | 98.50% | 98.50% |
| Battery Charge/Discharge efficiency | 99.90% | 99.90% |

AE 50-70K TGSi

● **INVERTER**
Industrial

- INVERTER INDUSTRIALE
- TRIFASE
- POTENZA DA 50 A 70KW
- DIMENSIONI 650x450x260 mm
- PESO 50kg



CERTIFICATIONS

IEC/EN 62109-1/2, IEC/EN 61000-6-1/3, EN50549, IEC61727/IEC62116, CEI 0-21, CEI 0-16, C10/C11, VDE 4105, VDE 0124, G99, RD244, UNE217001, UNE217002, NC RFG, NRS097-2-1, NB/T 32004, BIS



FAULT DETECTOR



AFFIDABILE



I-V DIAGNOSIS



WI-FI CONNECT

| INVERTER MODULE | AE 50K TGSi | AE-60K TGSi | AE-70K TGSi |
|---|--------------------------------|--------------------------------|--------------------------------|
| DC INPUT | | | |
| Max PV Input Power | 80kW | 96kW | 112kW |
| Max PV Input Voltage | 1100V | 1100V | 1100V |
| Start-up Voltage | 250V | 250V | 250V |
| MPPT Voltage range/Full load voltage MPPT range | 200/1000V, 520/850V | 200/1000V, 520/850V | 200/1000V, 600/850V |
| Numbers of MPP Trackers/String per MPPT | 4, 3/2/3/2 | 4, 3/3/3/3 | 3, 3/3/3/3 |
| Max Current per MPPT | 39/26/39/26A | 39A | 39A |
| Max Short circuit Current per MPPT | 48/32/48/32A | 48A | 48A |
| AC OUTPUT | | | |
| Rated output power | 50kW | 60kW | 70kW |
| Max output power | 55kVA | 66kVA | 77kVA |
| Max output current | 79.7A | 79.4A | 92.6A |
| Rated grid voltage | 230/400Vac | 277/480Vac | 277/480Vac |
| Rated frequency | 50/60Hz | 50/60Hz | 50/60Hz |
| THDI(Rated power) | <3% | <3% | <3% |
| Power factor | >0.99(0.8leading...0.8lagging) | >0.99(0.8leading...0.8lagging) | >0.99(0.8leading...0.8lagging) |
| EFFICIENCY | | | |
| Max efficiency | 98.70% | 98.80% | 98.80% |
| EU Efficiency | 98.40% | 98.40% | 98.50% |
| Battery Charge/Discharge efficiency | 99.90% | 99.90% | 99.90% |

AE 100-136K TGSi

● **INVERTER**
Industrial

- INVERTER INDUSTRIALE
- TRIFASE
- POTENZA DA 100 A 136 K
- DIMENSIONI 1050 x660 x 330 mm
- PESO 95kg / 101kg



CERTIFICATIONS

IEC/EN 62109-1/2, IEC/EN 61000-6-1/3, IEC/EN 61000-6-2/4, EN50549, IEC61727/IEC62116, CEI 0-21/CEI 0-16, C10/C11, VDE 4105, VDE 0124, G99, RD244, UNE217001, UNE217002, NC RfG, TOR Erzeuger, NRS097-2-1, NB/T 32004



FAULT DETECTOR



AFFIDABILE



I-V DIAGNOSIS



WI-FI CONNECT

| INVERTER MODULE | AE 100K TGSi | AE-136K TGSi |
|---|--------------------------------|--------------------------------|
| DC INPUT | | |
| Max PV Input Power | 150kW | 160kW |
| Max PV Input Voltage | 1100V | 1100V |
| Start-up Voltage | 250V | 250V |
| MPPT Voltage range/Full load voltage MPPT range | 180/1000V, 530/850V | 180/1000V, 560/850V |
| Numbers of MPP Trackers/String per MPPT | 9, 2 | 12, 2 |
| Max Current per MPPT | 30A | 30A |
| Max Short circuit Current per MPPT | 40A | 40A |
| AC OUTPUT | | |
| Rated output power | 100kW | 136kW |
| Max output power | 110kVA | 150kVA |
| Max output current | 158.8A | 160.4A |
| Rated grid voltage | 230/400Vac, 3L/N/PE, 3L/PE | 311/540Vac, 3L/N/PE,3L/PE |
| Rated grid frequency | 50/60Hz | 50/60Hz |
| THDI(Rated power) | <3% | <3% |
| Power factor | >0.99(0.8leading...0.8lagging) | >0.99(0.8leading...0.8lagging) |
| EFFICIENCY | | |
| Max efficiency | 98.70% | 98.70% |
| EU Efficiency | 98.50% | 98.50% |
| Battery Charge/Discharge efficiency | 99.90% | 99.90% |

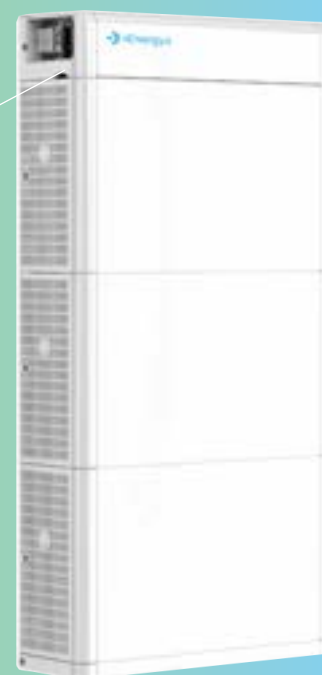
Batterie



● BATTERIE

| | | |
|--------------|----------------------|----|
| Low Voltage | ● AE Low Tower 5.12 | 26 |
| High Voltage | ○ AE High Tower 2.56 | 27 |

- Batteria a basso voltaggio
- Capacità 5.12KW
- Control Box integrato
- Configurazione modulare
- Battery Cell: LifePO₄



Certifications

CE, IEC, UN38.3, MSDS



EASY INSTALL



VERSATILE



MODULARE



RESISTE ALLE TEMPERATURE

| BATTERY | AE 5.12 LOW TOWER |
|----------------------------------|-----------------------------|
| Battery cell | Life PO ₄ |
| Battery system capacity | 10.24 kWh |
| Module number | from 2 to 4 |
| Nominal capacity | 200 Ah |
| Depth of discharge | 80% |
| Nominal voltage | 51.2 V |
| Voltage range | 43.2~56.16 Vdc |
| Nominal charge/discharge current | 100 A |
| Dimension | 640x890x200mm |
| Weight | 119 Kg |
| Installation | Stacked |
| Temperature of charge | 0 ~ 55 °C |
| Temperature of discharge | -20 °C ~ +60 °C |
| Protection degree | IP65 |
| Communication port | RS485, CAN |
| Display | LED |
| Operation humidity | 5% ~95% |
| Max operating altitude | 2000 m |
| Cycle life | 6000@80% DOD, 25 °C, 0.5 °C |

- Batteria ad alto voltaggio
- Capacità 2.56KW
- Control Box integrato
- Configurazione modulare
- Battery Cell: LifePO₄



Certifications | CE, CB, UN38.3, MSDS



EASY INSTALL



VERSATILE



MODULARE



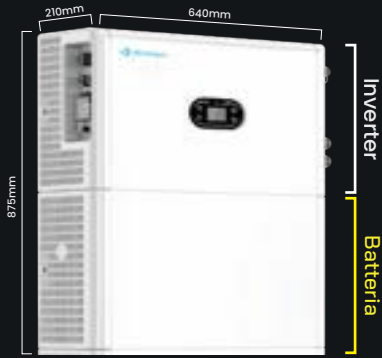
RESISTE ALLE TEMPERATURE

| BATTERY | AE 2.56 HIGH TOWER |
|----------------------------------|-----------------------------|
| Battery cell | Life PO4 |
| Battery system capacity | 7.68 kWh |
| Module number | from 3 to 10 |
| Nominal capacity | 50 Ah |
| Depth of discharge | 90% |
| Nominal voltage | 153.6 V |
| Voltage range | 129.6~168.48 Vdc |
| Nominal charge/discharge current | 50 A |
| Dimension | 600x820x210mm |
| Weight | 102.5 Kg |
| Installation | Stacked |
| Temperature of charge | 0 ~ 55 °C |
| Temperature of discharge | -20 °C ~ +60 °C |
| Protection degree | IP65 |
| Communication port | RS485, CAN |
| Display | LED |
| Operation humidity | 5% ~95% |
| Max operating altitude | 2000 m |
| Cycle life | 6000@80% DOD, 25 °C, 0.5 °C |

Configurazioni



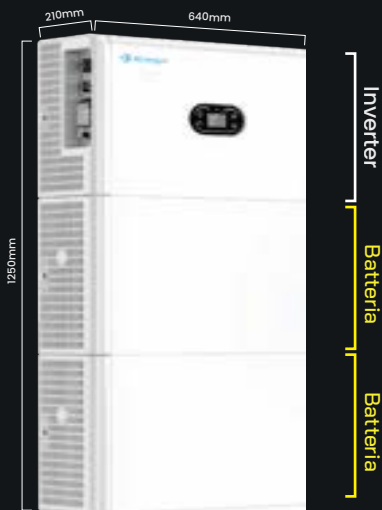
| | |
|----------------------------------|----|
| ● Configurazioni All In One | 29 |
| ○ Inverter Home + Batterie | 30 |
| ● Inverter Industrial + Batterie | 31 |



AE 3K M-Tower

- 1 Inverter
- 1 Modulo batteria

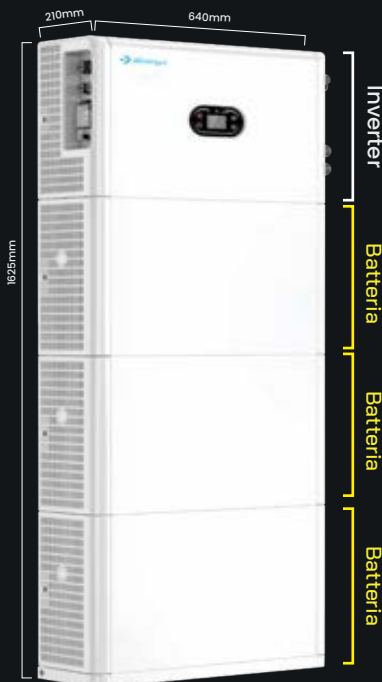
5.12 kWh



AE 4K M-Tower

- 1 Inverter
- 2 Moduli batteria

10.24 kWh



AE 6K M-Tower

- 1 Inverter
- 3 Moduli batteria

15.36 kWh